



NOBLEFOX

RESIDENTIAL PORTFOLIO

# LANDSCAPE ARCHITECTURE & DESIGN

We are a bespoke landscape architecture and garden design consultancy focused on creating stylish, comfortable living environments in New Zealand and abroad. We offer a full landscape design service from concept to detailed design and project management.

We help clients to create beautiful spaces for their lifestyles. Our work takes us throughout New Zealand and abroad, allowing us to continually take inspiration from the landscape and places we go.

The Noble Fox team, led by Louise Dunning (Registered Landscape Architect), has significant experience in the design of high quality Landscape Architecture projects for both commercial and residential spaces. We work autonomously or collaborate with other project consultants to produce robust design outcomes for our clients, with a strong knowledge of the construction and maintenance requirements to ensure they continue to look good. All projects reflect our Client's emphasis on great design and an honest expression of the country and culture where they are located.

We have strong relationships with specialist subconsultants to draw on as required. Our projects have several constants – the requirement to produce a quality design, reflecting the client and local character, within programme and budget.

Typically the residential design process begins with an initial meeting onsite to gather site information, discuss initial ideas, preferences and better understand the project

requirements. From this we can form the design brief, a scope of works and fee proposal before proceeding to design work.

## **Louise Dunning**

03 5724773 | 02 770 65374 | [info@noblefox.co.nz](mailto:info@noblefox.co.nz)

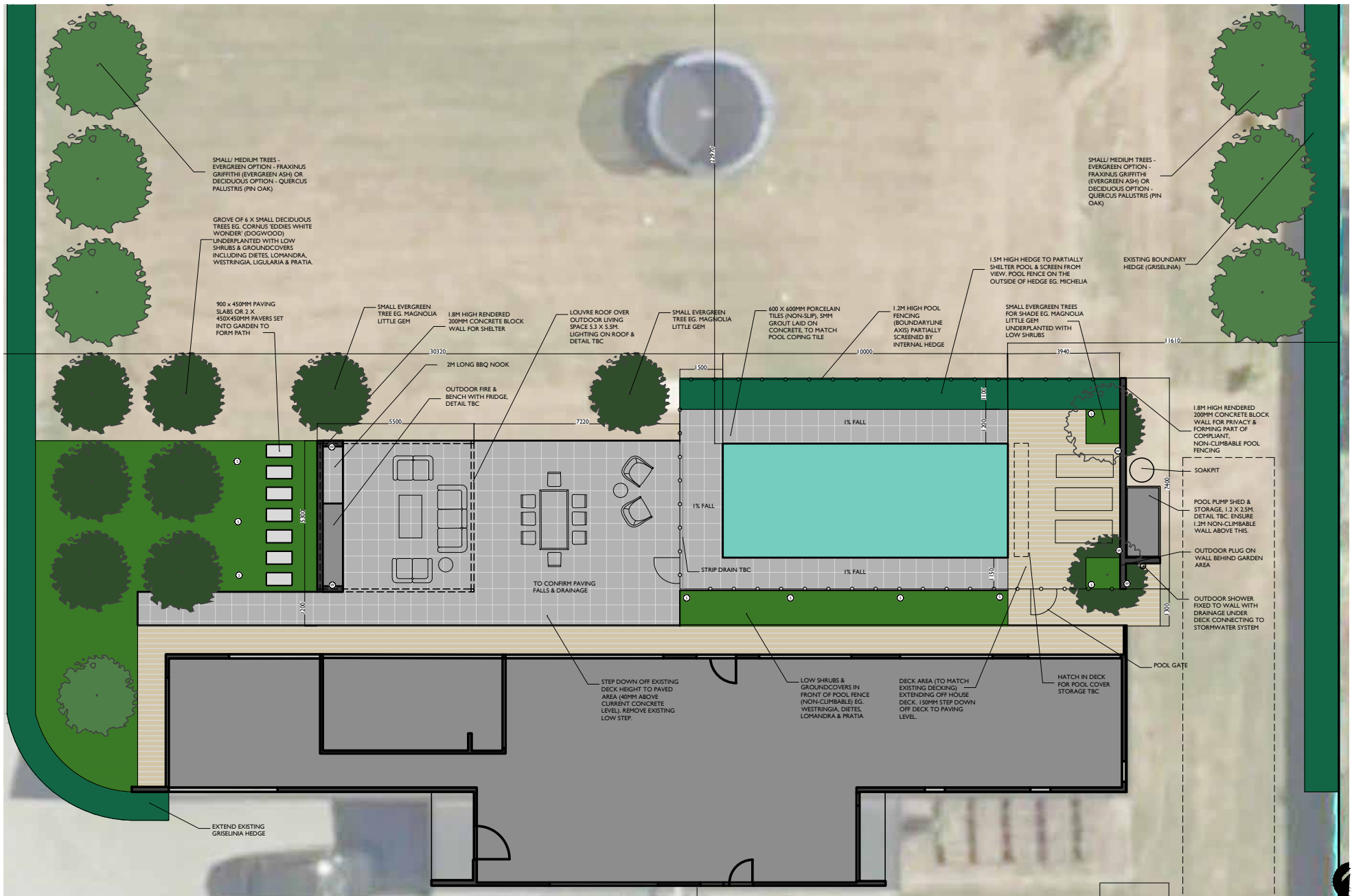
## **We offer a full Landscape Architectural scope of work including:**

- Site analysis (both prior to and during the design phase) and feasibility
- Master planning and Conceptual Design
- Spatial Planning and Styling
- Exterior Colour Consultation
- Detailed Design and Specifications
- Procurement
- Construction Observation



CONCEPT DESIGN

# LANDSCAPE CONCEPT PLAN





# PRELIMINARY MOODBOARD



Exposed aggregate concrete colour mixed options



Rendered concrete block wall (retaining wall finish option)



Shed option



Trendz Burton outdoor fireplace (kitset including hearth & corten woodboxes)



Shed option



Modscene oversized planters in courtyard



Purple heart timber decking (not picture framed)



Insitu concrete retaining wall (not the trough... yet)



Aggregate driveway with stone edging



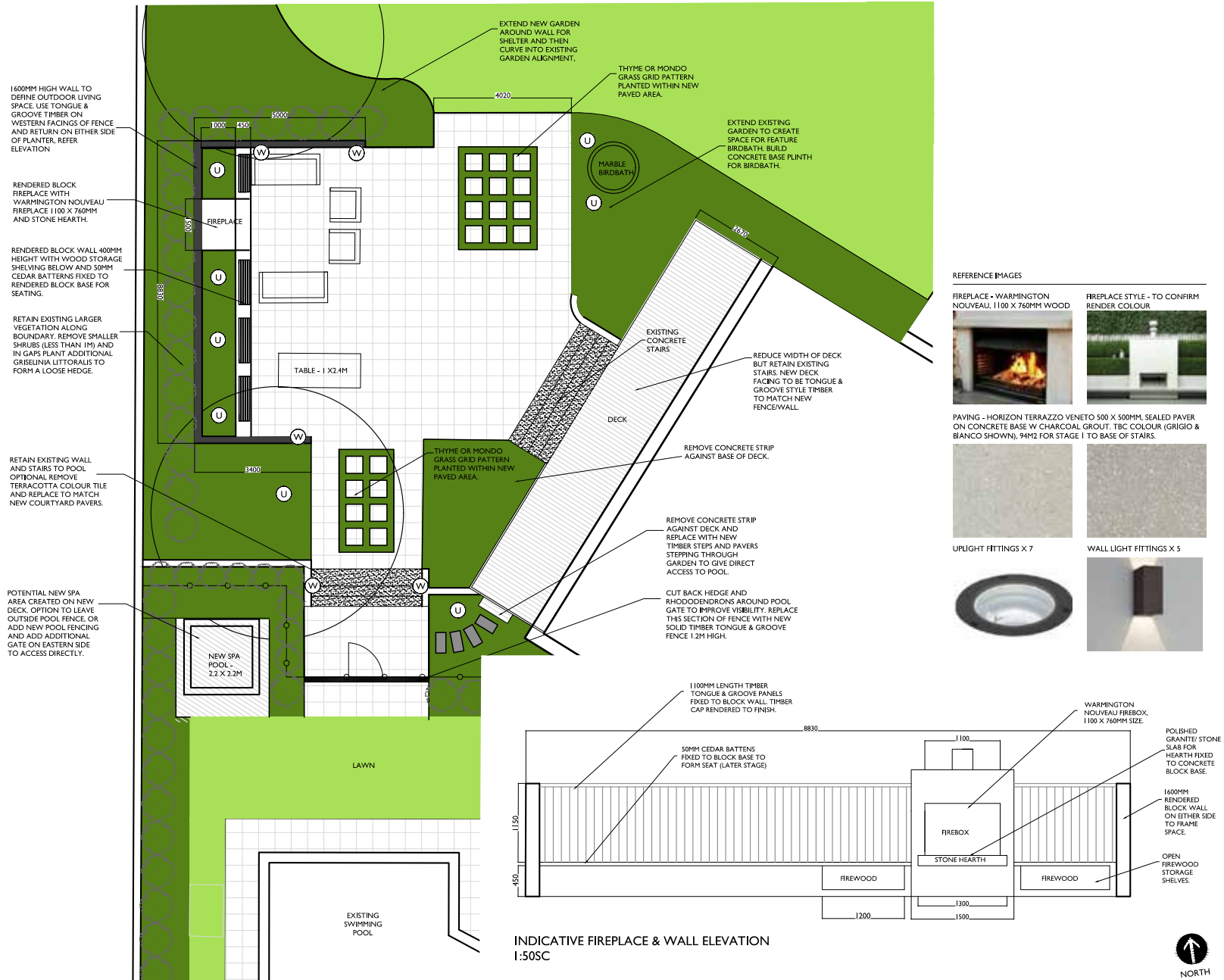
Exposed aggregate concrete with honed concrete borders



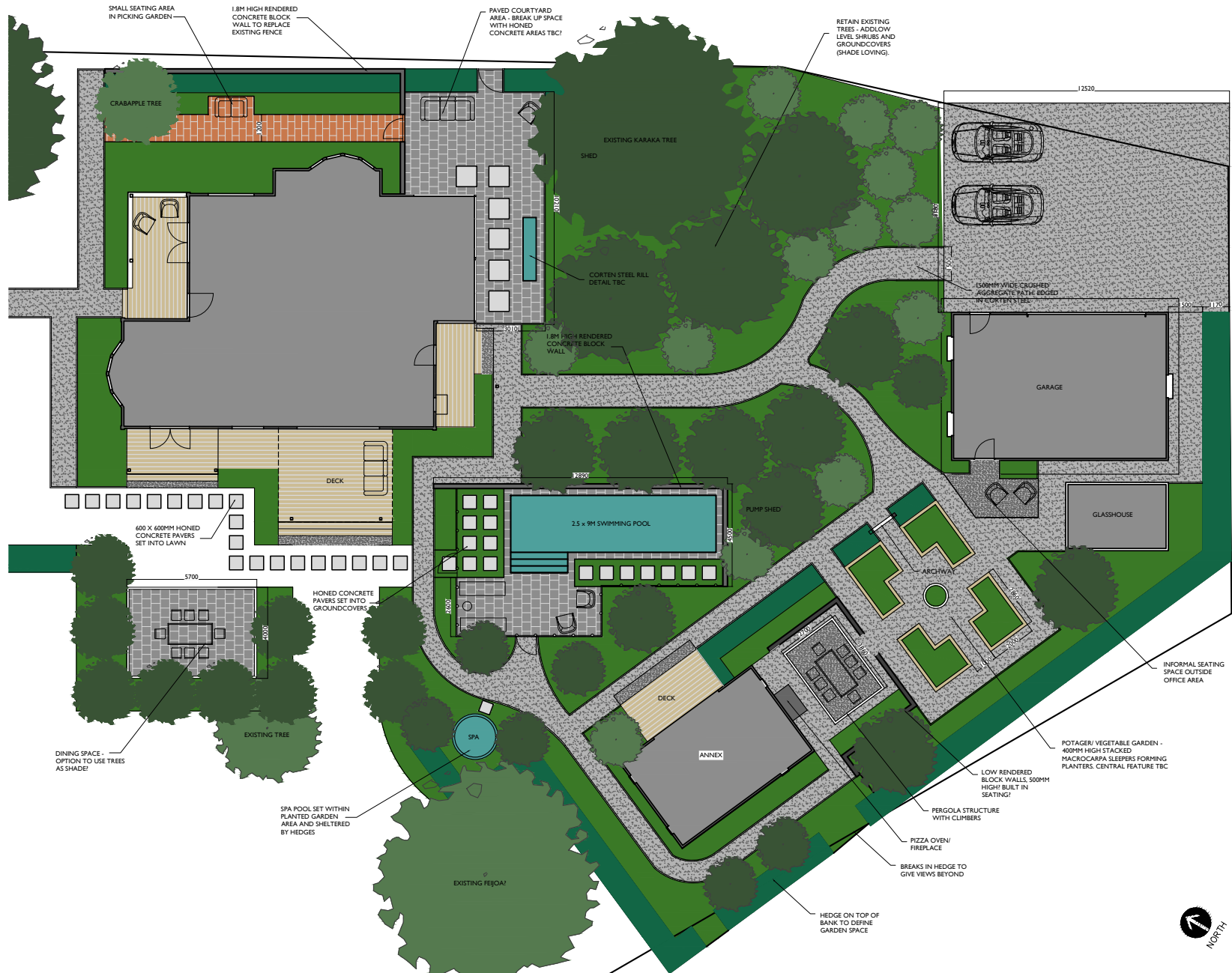
Exposed aggregate concrete with honed concrete borders



# OUTDOOR LIVING AREA CONCEPT PLAN



# LANDSCAPE CONCEPT PLAN





# LANDSCAPE CONCEPT PLAN



# LANDSCAPE CONCEPT PLAN



# HARDSCAPE MATERIALS PALETTE



Entrance Path



Timber Boundary Fence



Front Pedestrian Gate



Water Feature Concept



Stone Wall



Entrance Stairs



LED Strip Lighting on Entry



Timber Screen



Specimen Trees



Basalt Stone Wall Texture

# SOFTSCAPE MATERIALS PALETTE



Dicondra sp.



Blechnum sp.



Bromeliad vriesea



Chamaerops humilis



Coprosma repens



Cyca revolta



Dietes iriodes



Ficus pumila



Ficus tuffi



Lomandra longifolia



Howea forstenia (Kentia Palm)



Mertya sinclairii (Puka)



Michelia yunnanensis



Ophiopogon japonicus



Ophiopogon planiscarpus



Philodendron xanadu



Pratia angulata



Bamboo



Solerolia solerolii



Rhopostylis sapida (Nikau Palm)



Trachelospernum jasminiodes



Acer palmatum



Plumeria obtusa



Griselinia littoralis

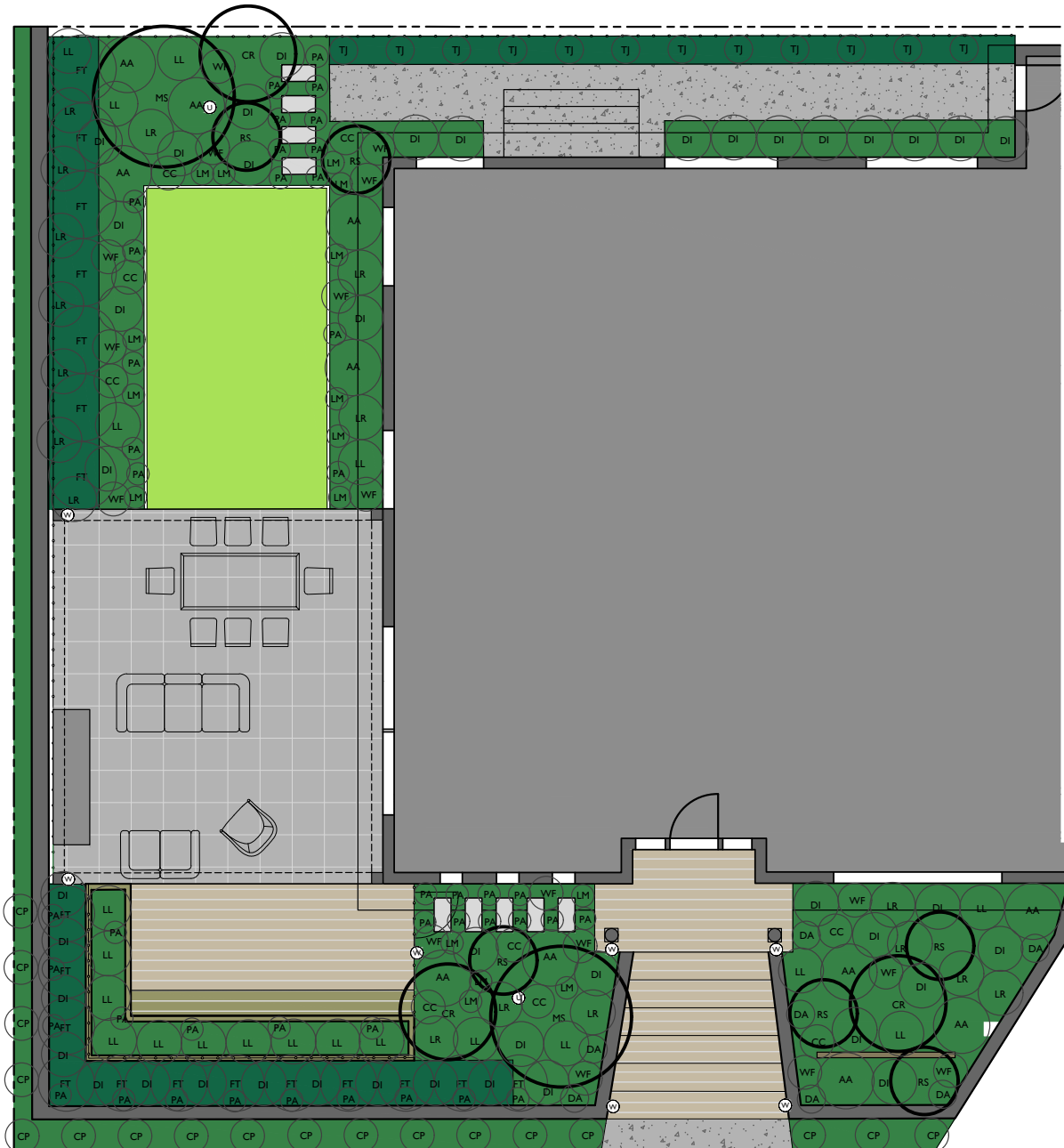


Lonicera nitida



DETAILED DESIGN

# PLANTING PLAN



## PLANT SCHEDULE

CODE	BOTANICAL NAME	QUANTITY	GRADE/HEIGHT	SPACING
AA	AGAVE ATTENUATA	11	PB12	1M
CC	CONVULVULUS CNEORUM	9	PB5	60CM
CR	COPROSMA REPENS (UPRIGHT)	4	1M+	NA
CP	COPROSMA REPENS PROSTRATA	18	PB8	1M
DA	DICHONDRA ARGENTEA	7	PB5	NA
DI	DIETES IRIODES	40	PB8	80CM
FT	FICUS TUFFY (PLEACHED)	19	1.2M+	1.2M/1M
LR	LIGULARIA RENIFORMIS (TRACTOR SEAT)	15	PB5	80CM
LM	LIRIOPE MUSCARI	13	PB5	40CM
LL	LOMANDRA 'LIMETUFF'	19	PB8	80CM
MS	MERTYA SINCLAIRII (PUKA)	2	1.2M+	NA
PA	PRATIA ANGULATA	31	PB5	40CM
RS	RHOPOSTYLIS SAPIDA (NIKAU)	6	1M+	NA
TJ	TRACHELOSPERNUM JASMINIODES (STAR JASMINE) - CLIMBER TRAINED UP FENCE	12	PB5	1M
WF	WESTRINGIA FRUTICOSA	16	PB5	60CM



TJ - TRACHELOSPERNUM JASMINIODES (STAR JASMINE)    LR - LIGULARIA RENIFORMIS (TRACTOR SEAT)    WF - WESTRINGIA FRUTICOSA



PA - PRATIA ANGULATA - GROUNDCOVER    DI - DIETES IRIODES (NATIVE IRIS)    DA - DICHONDRA ARGENTEA



RS - RHOPOSTYLIS SAPIDA (NIKAU)    FT - FICUS TUFFY - PLEACHED HEDGE    CR - COPROSMA REPENS

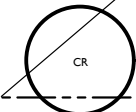


AA - AGAVE ATTENUATA    MS - MERTYA SINCLAIRII (PUKA)    CP - COPROSMA REPENS PROSTRATA

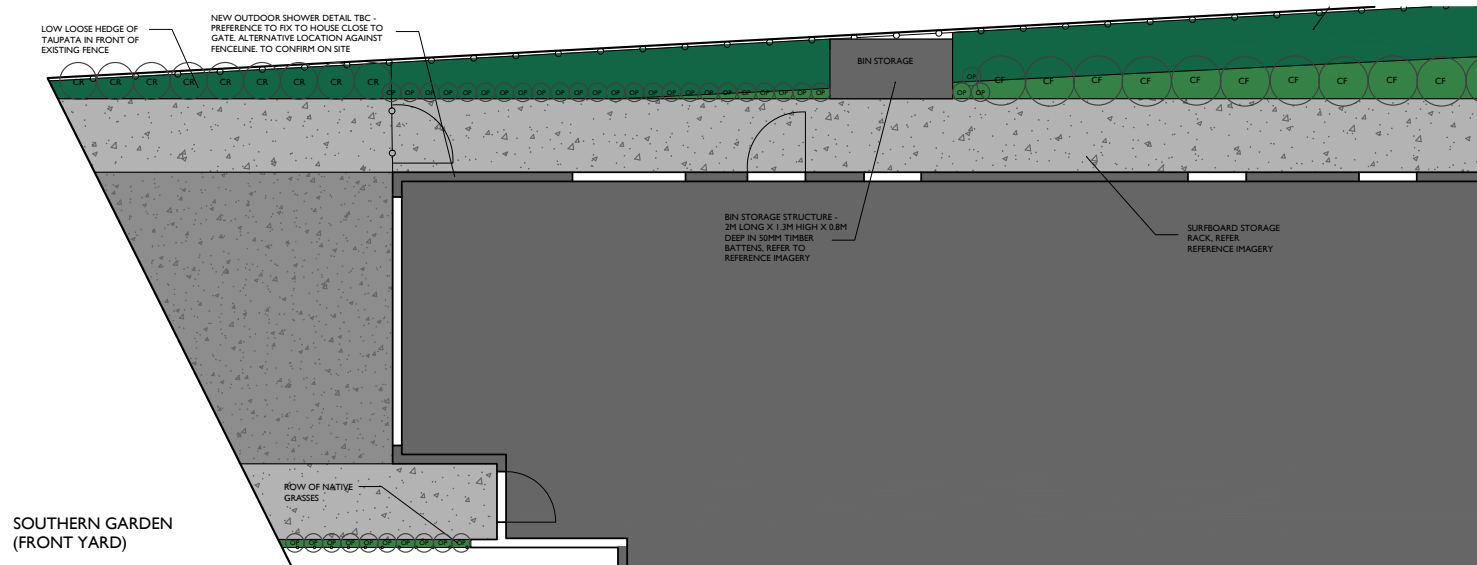
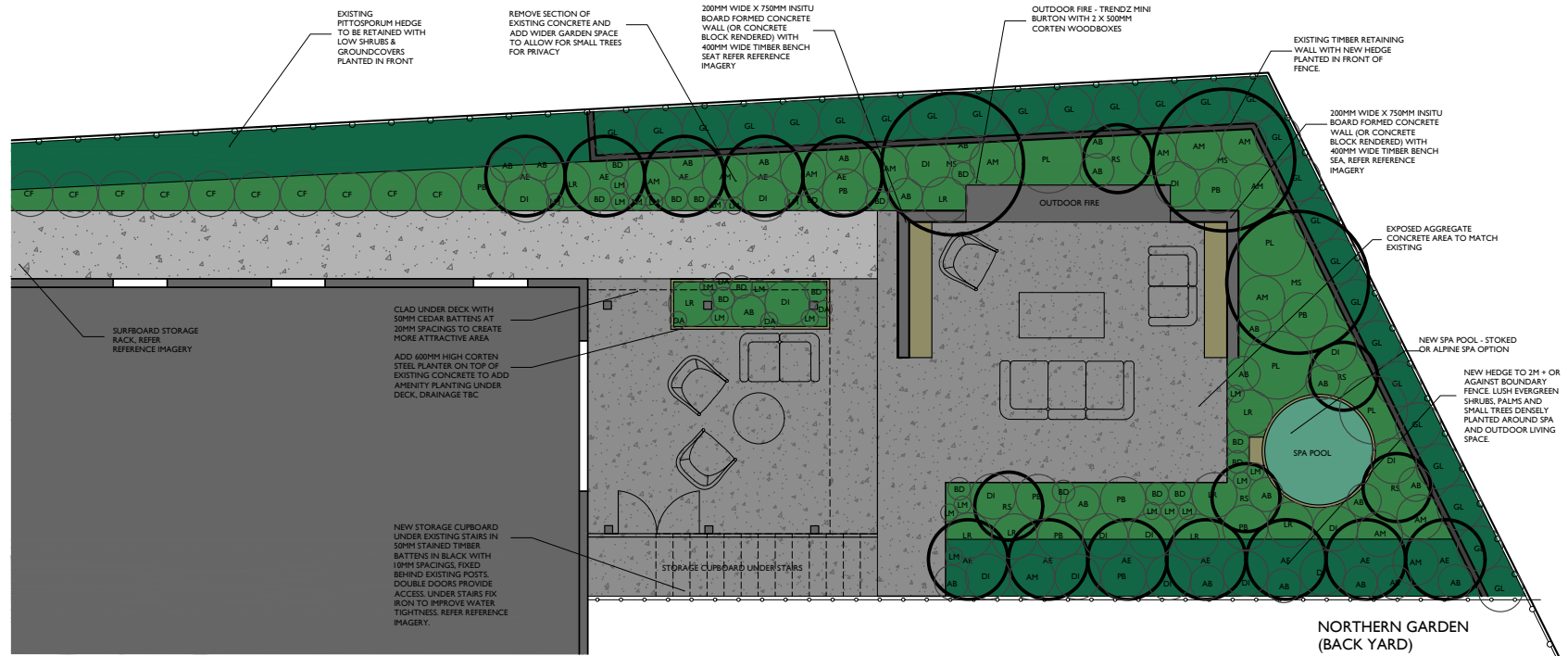


LL - LOMANDRA 'LIMETUFF'    CC - CONVULVULUS CNEORUM    LM - LIRIOPE MUSCARI

1. ALL GARDEN AREAS TO HAVE 500MM GOOD QUALITY (WEED FREE) TOPSOIL (IF NOT ALREADY ONSITE) AND 50MM FINE SHREDDED BARK MULCH
2. NEW TREES TO BE DOUBLE STAKED
3. SLOW RELEASE FERTILISER TABLETS TO BE USED FOR EACH PLANT
4. ALL PLANT MATERIALS TO BE OF GOOD QUALITY AND DISEASE FREE



# PLANTING PLAN



# PLANT MATERIALS PALETTE & SCHEDULE



MS - Metra Sinclairi (Puka)



AE - Alectryon Excelsa (Titoki) Pleached



RS - Rhopostylis Sapida (Nikau)



BD - Blechnum Discolor



GL - Griseliina 'Broadway Mint'



DA - Dichondra Argentea



AM - Arthropodium 'Matapouri Bay' (Renga Renga)



DI - Diets Iriodes (Native Iris)



CF - Chionochoila Flavicans



PL - Pseudopanax Lessonii



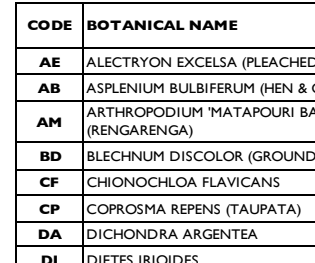
CR - Coprosma Repens (Taupata)



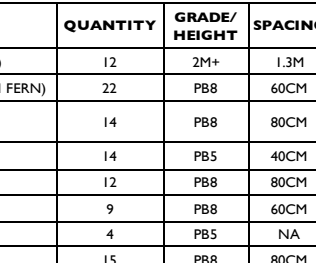
PD - Phormium 'Dark Secret'



AB - Asplenium Bulbiferum (Hen & Chicken Fern)



GL - GRISELINIA 'BROADWAY MINT' OR SIMILAR VAR.



LR - LIGULARIA RENIFORMIS (TRACTOR SEAT)



OP - Ophiopogon Planiscarpus (Black Mondo Grass)



LM - Liriope Muscari



LR - Ligularia Peniformis (Tractor Seat)

CODE	BOTANICAL NAME	QUANTITY	GRADE/HEIGHT	SPACING
AE	ALECTRYON EXCELSA (PLEACHED TITOKI)	12	2M+	1.3M
AB	ASPENIUM BULBIFERUM (HEN & CHICKEN FERN)	22	PB8	60CM
AM	ARTHROPODIUM 'MATAPOURI BAY' (RENGARENGA)	14	PB8	80CM
BD	BLECHNUM DISCOLOR (GROUND COVER)	14	PB5	40CM
CF	CHIONOCHLOA FLAVICANS	12	PB8	80CM
CP	COPROSMA REPENS (TAUPATA)	9	PB8	60CM
DA	DICHONDRA ARGENTEA	4	PB5	NA
DI	DIETES IRIOIDES	15	PB8	80CM
GL	GRISELINIA 'BROADWAY MINT' OR SIMILAR VAR.	27	1M+	80CM
LR	LIGULARIA RENIFORMIS (TRACTOR SEAT)	9	PB8	80CM
LM	LIRIOPE MUSCARI	21	PB5	40CM
MS	MERTYA SINCLAIRII (PUKA)	3	2M+	NA
OP	OPHIOPOGON PLANISCARPUS (BLACK MONDO)	46	PB3/5	30CM
PB	PHORMIUM 'DARK SECRET' OR SIMILAR VAR.	9	PB8	80CM
PL	PSEUDOPANAX LESSONII	4	PB18	NA
RS	RHOPASTYLIS SAPIDA (NIKAU)	5	1M+	NA

1. All garden areas to have 500mm good quality (weed free) topsoil (if not already onsite) and 50mm fine shredded bark mulch.
2. New trees to be double staked
3. Slow release fertiliser tablets to be used for each plant
4. All plant materials to be of good quality and disease free





IMPLEMENTATION

BLENHEIM GARDEN

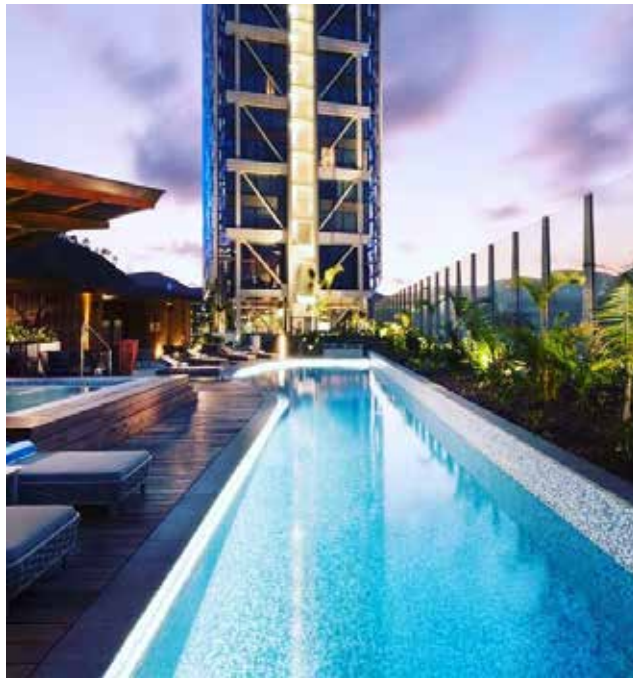


# HERNE BAY GARDEN

3D IMAGERY



# SWIMMING POOL DESIGN



MT EDEN GARDEN



# MARLBOROUGH OUTDOOR LIVING



# RESIDENTIAL GARDEN



# RESIDENTIAL GARDEN





noblefox.co.nz | @noble.fox | noblefoxdesign

